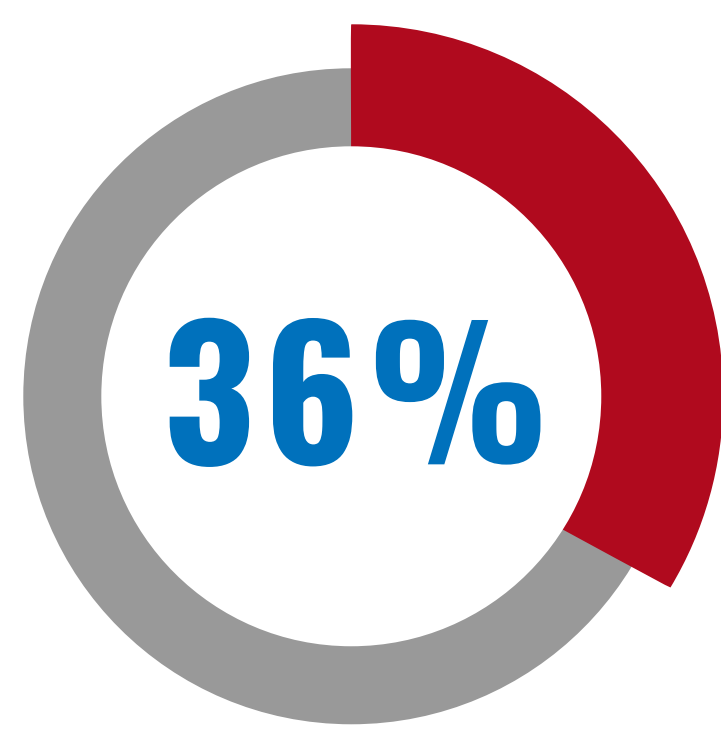
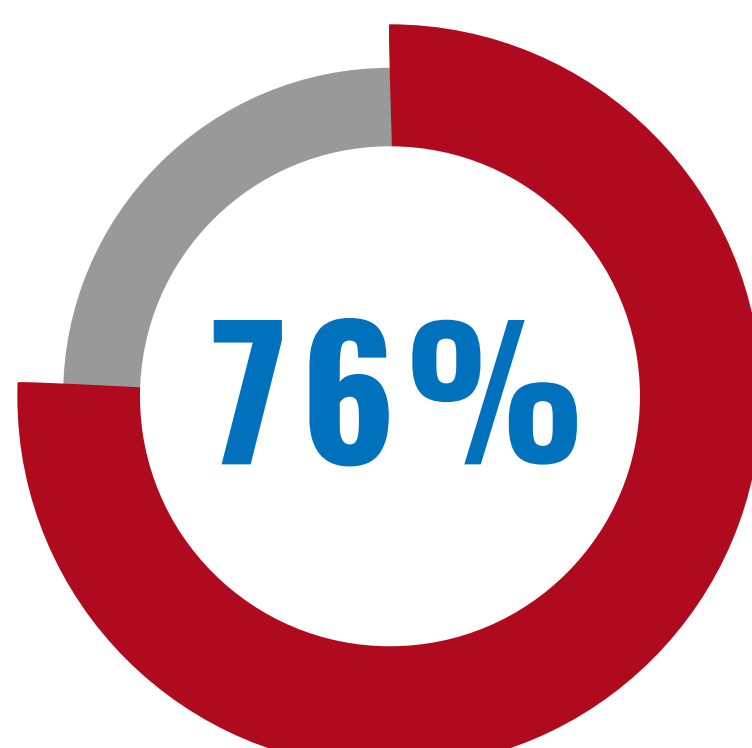




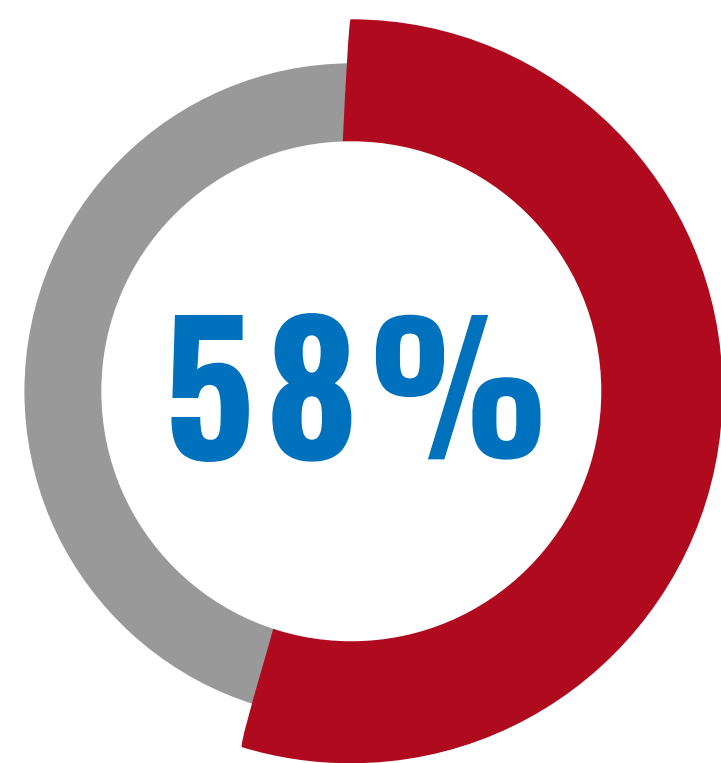
MOBILE DEVICES IN THE WORKPLACE:



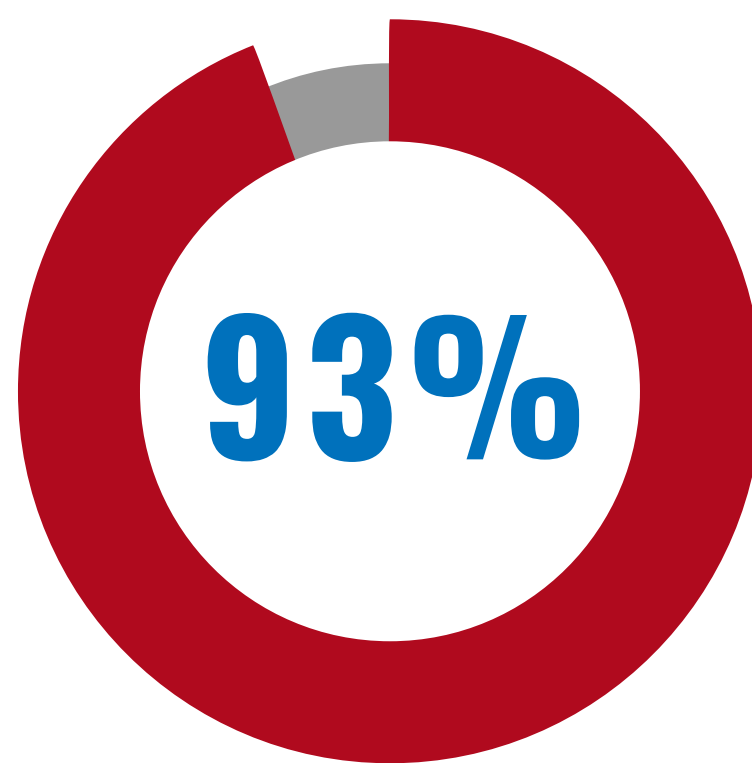
average productivity boost would be seen by workers if key enterprise applications were mobilized.



of employees believe they have increased productivity because of mobile capabilities.

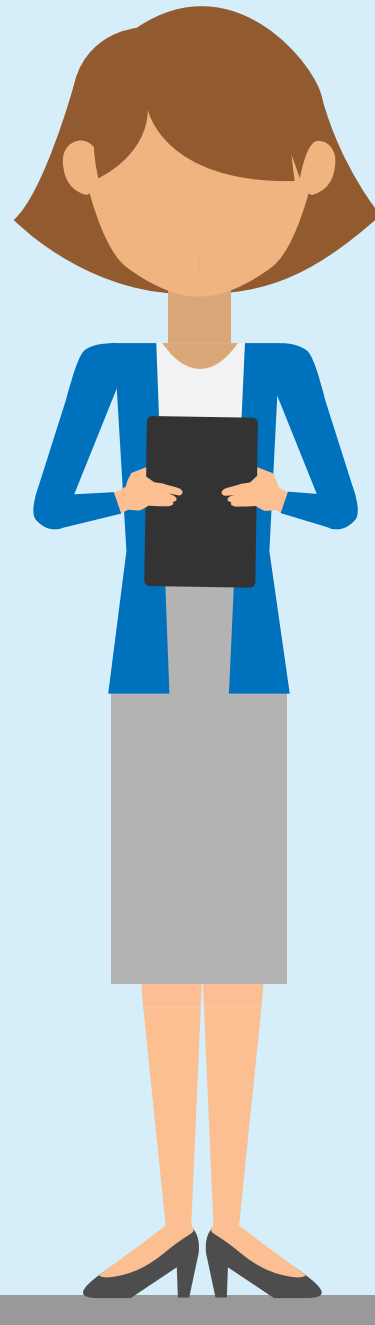


of employees believe their operations would improve by utilizing mobile devices.



of businesses have seen increases in workforce productivity for remote operations when using mobile capabilities.

MOBILE EASE AND EFFICIENCY:



In a study done on data entry using various platforms, users rated the **tablet a 4.16** efficiency satisfaction rating (out of 5) and **pen and paper** received a **2.4**.



Studies found that **mobile devices** can cut data collection costs by **74%**, and cut time by **46%**.



LOSSES ON POORLY TRACKED EQUIPMENT:



One study found that in a single year a university saved **\$667,882** in sourcing and filing equipment alone.



Paperwork is the **LARGEST OVERHEAD EXPENSE** in any organization.



It is estimated that **DATA ENTRY ERRORS** cost US businesses **\$18.2 BILLION** annually.



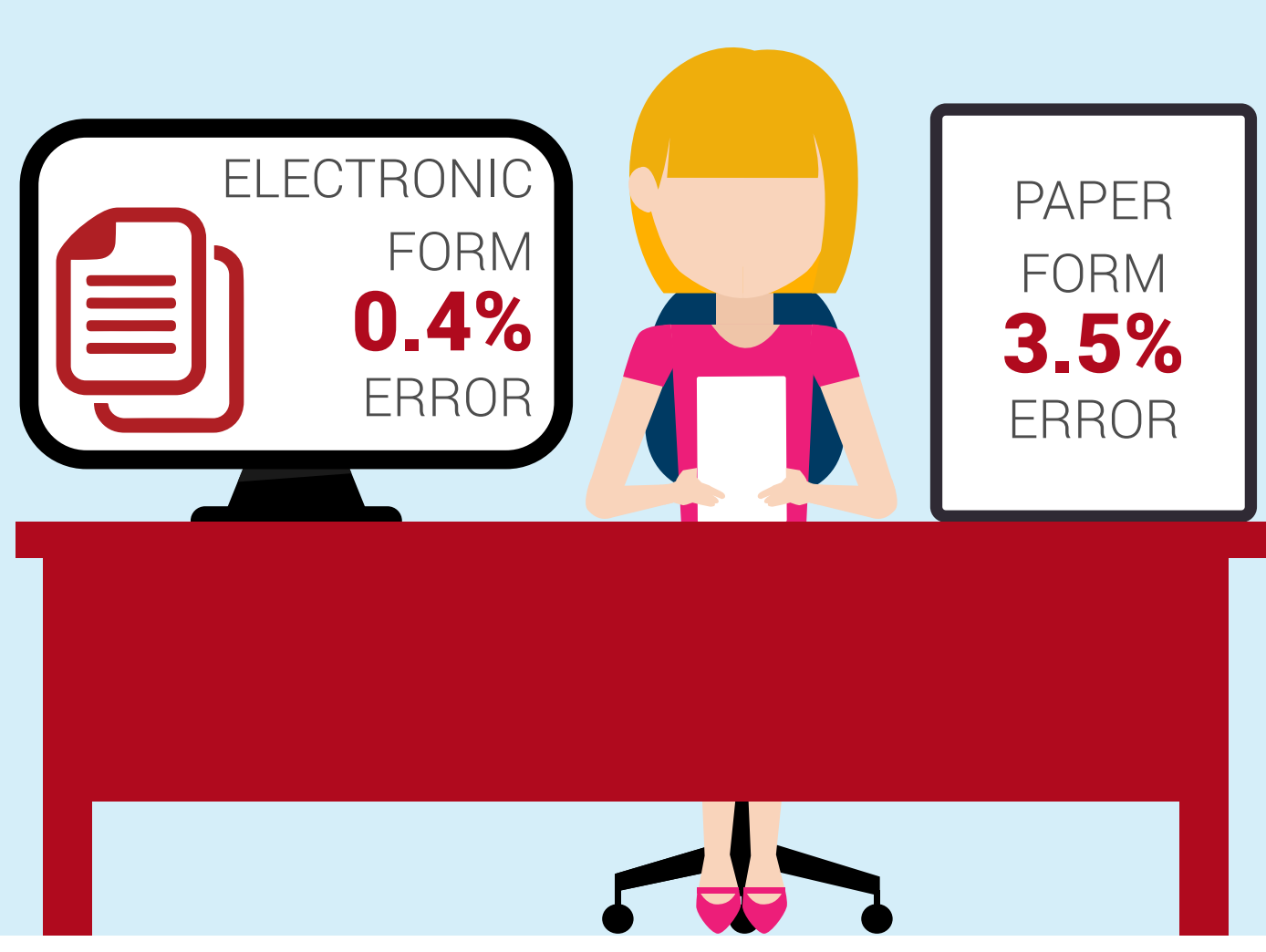
Retailers and manufacturers each **LOSE \$2 MILLION** for every \$1 billion in sales due to **BAD DATA MANAGEMENT**.

TRANSPOSING ERRORS/POINT OF ACTIVITY:

Managers spend an average of **4 WEEKS** a year searching for or waiting on **MISFILED, MISLABELED, UNTRACKED, OR "LOST" PAPER INFORMATION**.



Electronic forms show an error rate of **0.4%** while paper forms are at a **3.5%** error rate.



AUTO ID ENABLED MOBILITY:



In 2014, the total **RFID MARKET** is worth **\$8.89** billion, up from **\$7.77** billion in 2013 and **\$6.96** billion in 2012.



INDUSTRIAL use represents about **25%** of RFID use.



RFID PRODUCTIVITY IMPROVEMENTS can be significant, delivering labor cost reductions of **7.5%** or more in warehouse applications, and up to **40%** in regional distribution centers.



RFID can **SAVE 15-20%** of labor costs on restocking inventory and **SAVE 3-4%** of what would be lost revenue due to out of stock products.

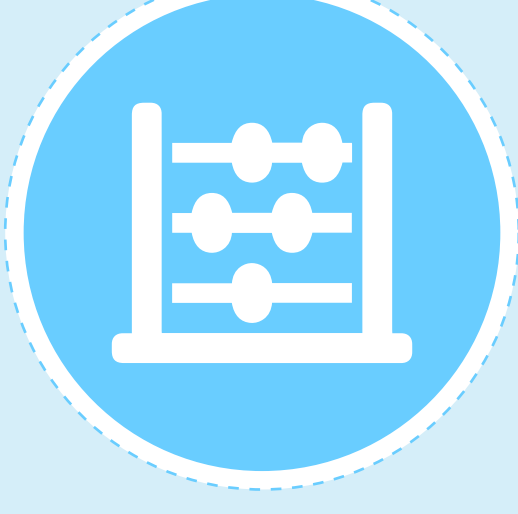


With automated applications for warehousing and distribution, tracking and maintenance workflow can be optimized by **20%**.

BENEFITS OF MOBILE ASSET TRACKING:



One study found that implementing mobile asset management reduced overhead costs by **20%**.



Using mobile asset tracking to perform physical and cycle counts can achieve **98%** accuracy of inventory levels.



Using mobile devices can decrease time spent auditing by **93%**.

MOBILE ASSET TRACKING BOTTOM LINE:



SAVES TIME



IMPROVES ACCURACY



REDUCES LOSS



IMPROVES EMPLOYEE PRODUCTIVITY

SOURCES:

<http://www.zdnet.com/article/enterprise-mobility-in-2014-app-ecolypse-now/>
<http://www.goreo.com/blog/336-40-mobile-devices-really-increase-productivity.html>
<http://www.mi-corporation.com/wp-content/uploads/2012/09/UMI-Mi-FormsStudyArticle.pdf>
<http://www.primintl.org/Buy-From-a-PRISM-Member/Free-Resources/why-records-management.html>
<http://www.pdstatats.com/news/archives/599>
<http://www.callcentrahelper.com/mobile-devices-increase-productivity-69252.htm>
<http://www.quicktagsurvey.com/blog/2014/05/27/research-data-collection-methods-paper-vs-tablets/>
http://www.aafp.org/dam/AAFP/documents/patient_care/nm/PneumococcalManuscript.pdf
<http://www.slideshare.net/FrostandSullivan/the-global-rfid-market-the-trend-today-and-what-lies-ahead>

A2B TRACKING

<https://gbr.pepperdine.edu/2010/08/the-cost-of-lost-data/>
<http://www.rfidjournal.com/articles/view?2602/2>
<http://www.cmmcity.com/articles/asset-management-using-mobile-computing-to-gain-a-competitive-advantage/>
<http://www.innovapptive.com/blog/reducing-too-for-mobile-enterprise-asset-management/>

www.a2btracking.com • (800) 733-7592 • sales@a2btracking.com